

How to convert an Infinty USB SMART into a Smargo/Argolis Smartreader+

Introduction

wb_electronics has a new device in its catalogue the infinity USB SMART.



This card reader has the advantage compare to the Smartreader+ to have an USB cable attached to it (+/- 130 cm) this allow to use any USB hub (event if the USB ports are horizontally set).

All the details on this product can be found at this address:

<http://www.infinityusb.com/default.asp?show=productsdetail&ProductID=12>

But the main advantage of this product is that now it can be flash to turn it into a Smartreader+ compatible device.

Prerequisite.

To be able to convert your Infinity USB Smart into a Smartreader+, you need to download the pack:

InfinityUSBSmart2smartreader_xxx.zip where xxx is the pack version.

For example: InfinityUSBSmart2smartreader_094B.zip

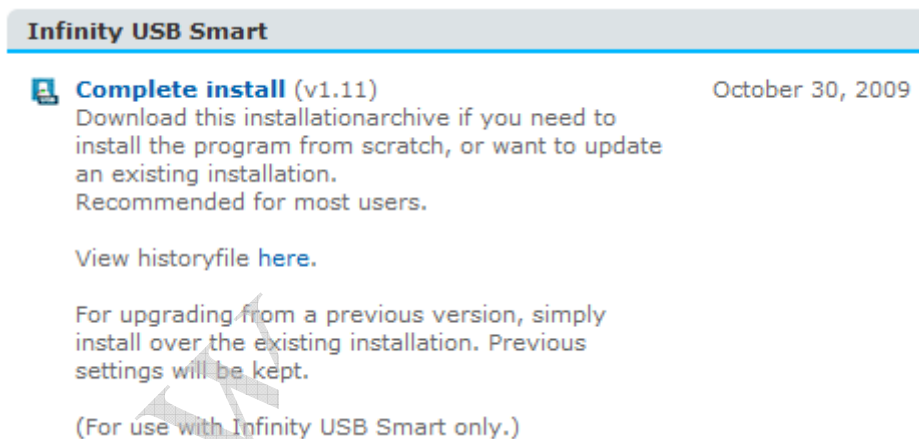
Then you need to unzip it somewhere on your PC.

Download and configuration

Go to the site:


<http://www.infinityusb.com>

Select download and take the bundle for the Infinity USB Smart (Complete install).



The screenshot shows a webpage header for "Infinity USB Smart". Below the header, there is a section for "Complete install (v1.11)" dated "October 30, 2009". The text describes downloading an installation archive for a fresh install or update, and is recommended for most users. It includes a link to "View historyfile here." and instructions for upgrading from a previous version. A note at the bottom specifies "(For use with Infinity USB Smart only.)".

Infinity USB Smart

 **Complete install (v1.11)** October 30, 2009

Download this installation archive if you need to install the program from scratch, or want to update an existing installation. Recommended for most users.

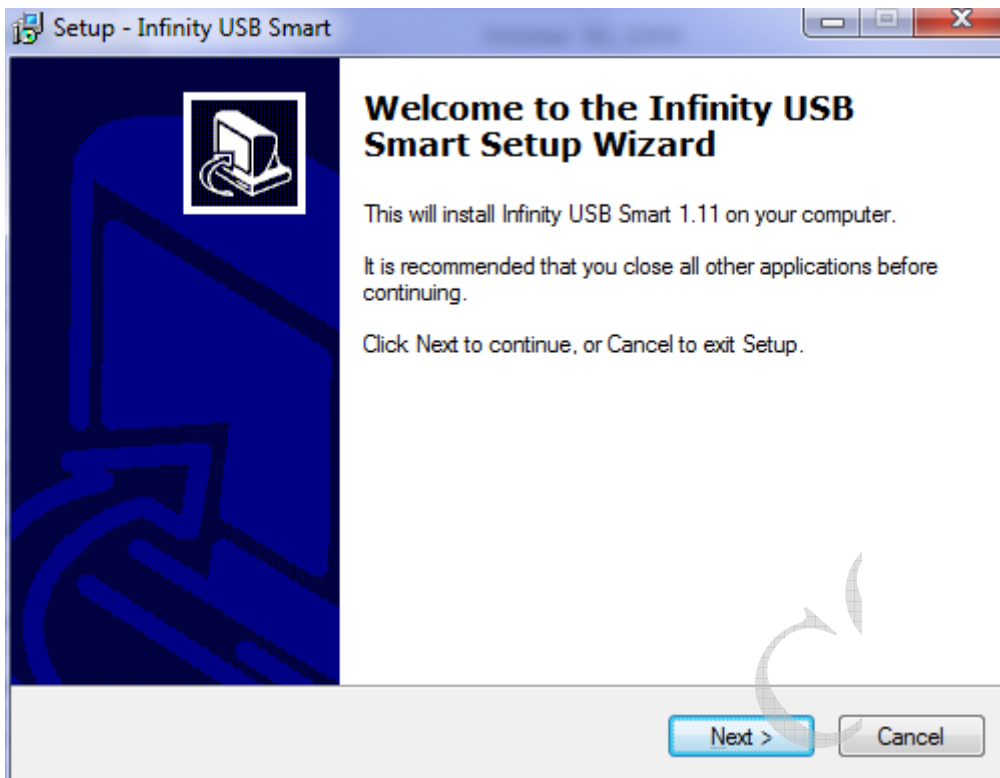
View historyfile [here](#).

For upgrading from a previous version, simply install over the existing installation. Previous settings will be kept.

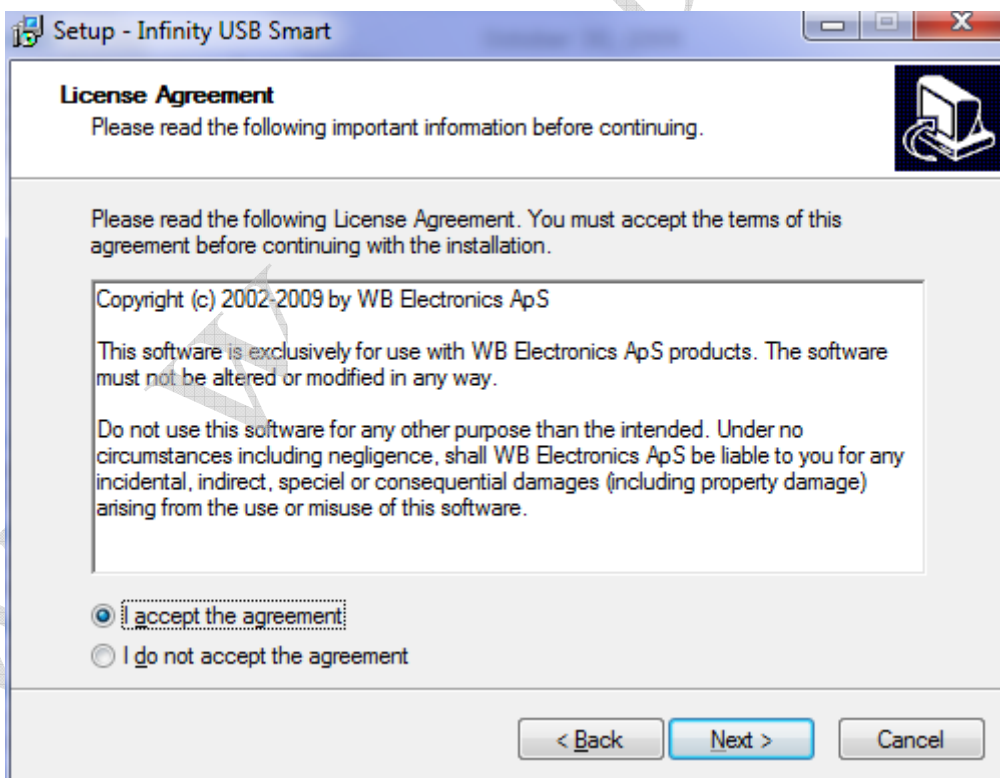
(For use with Infinity USB Smart only.)

Then install it.

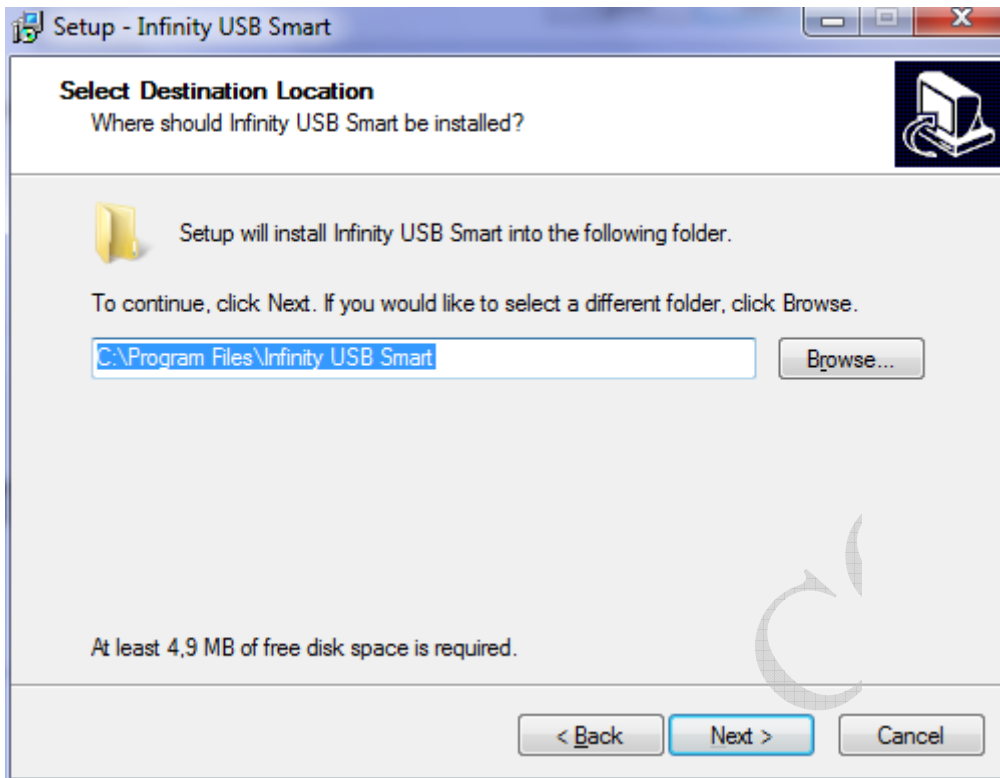
Since this pack is not signed, you will need to confirm that you trust it at the Windows prompt.



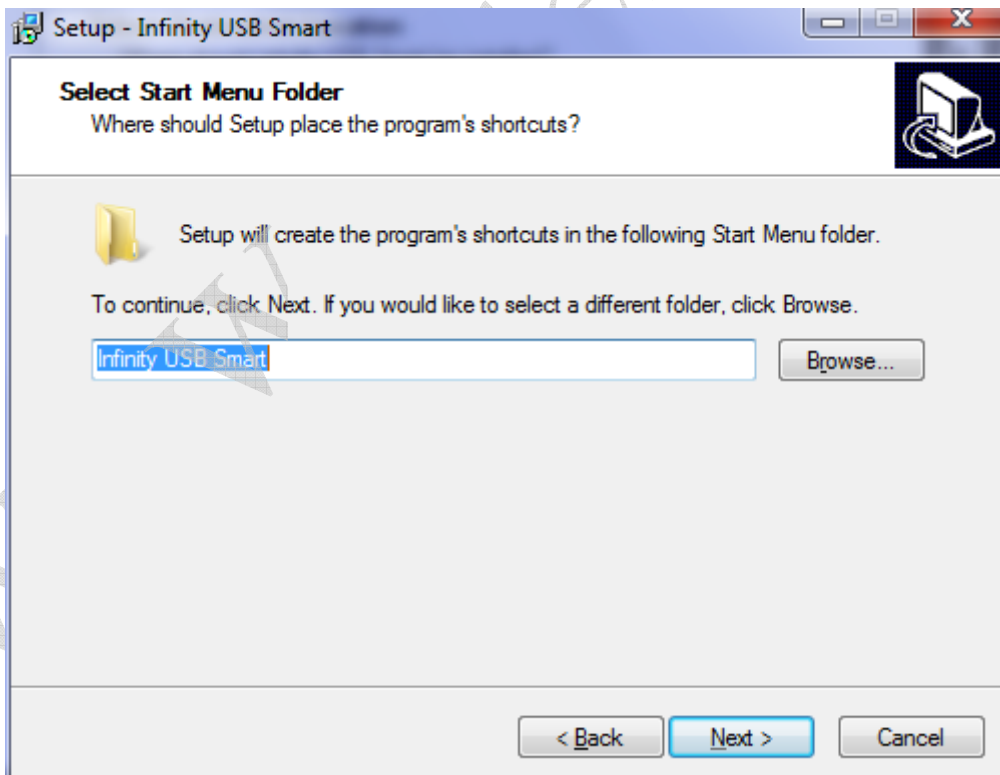
Press Next>



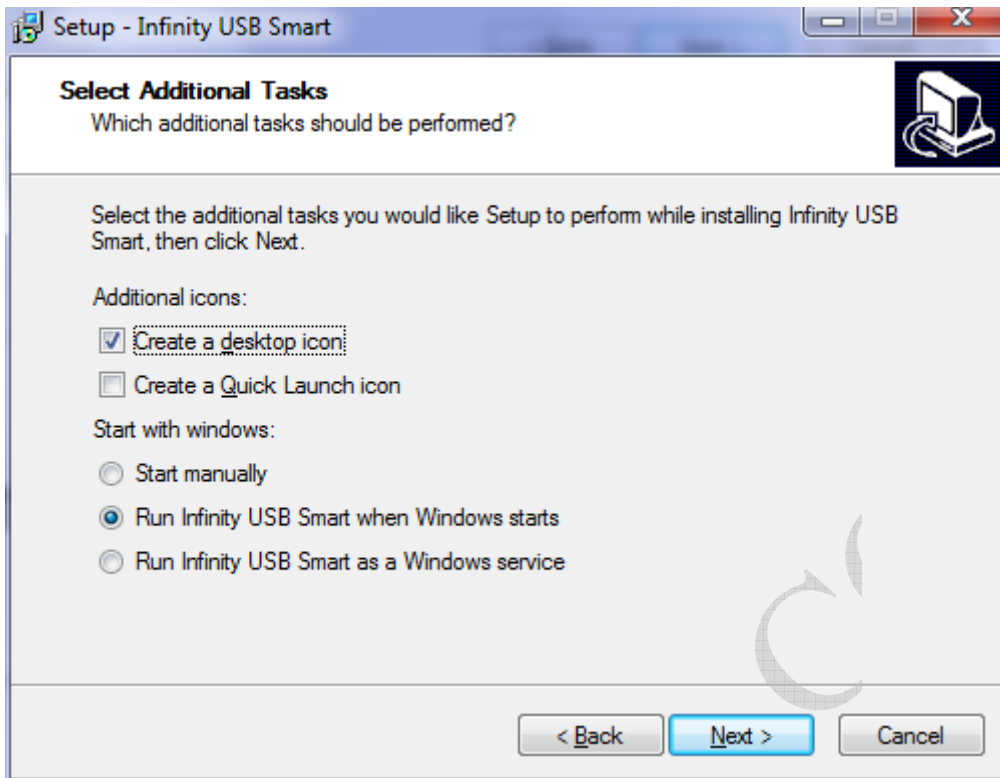
Click on: I accept the agreement and then press Next>



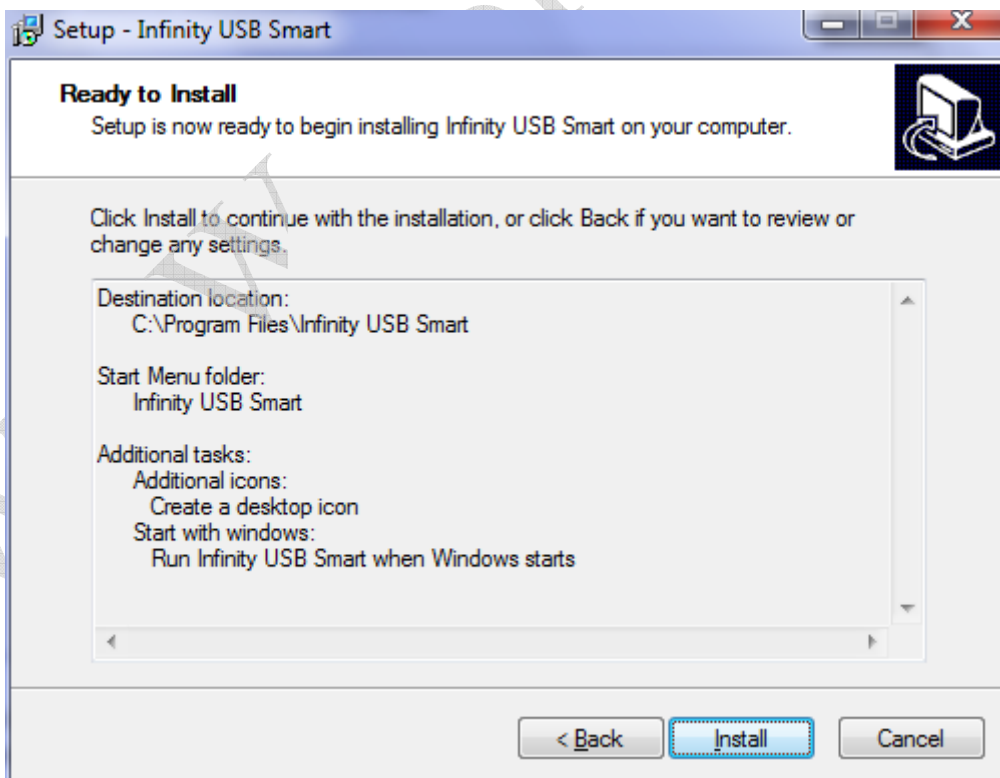
The default folder should fit most of you. Press Next>



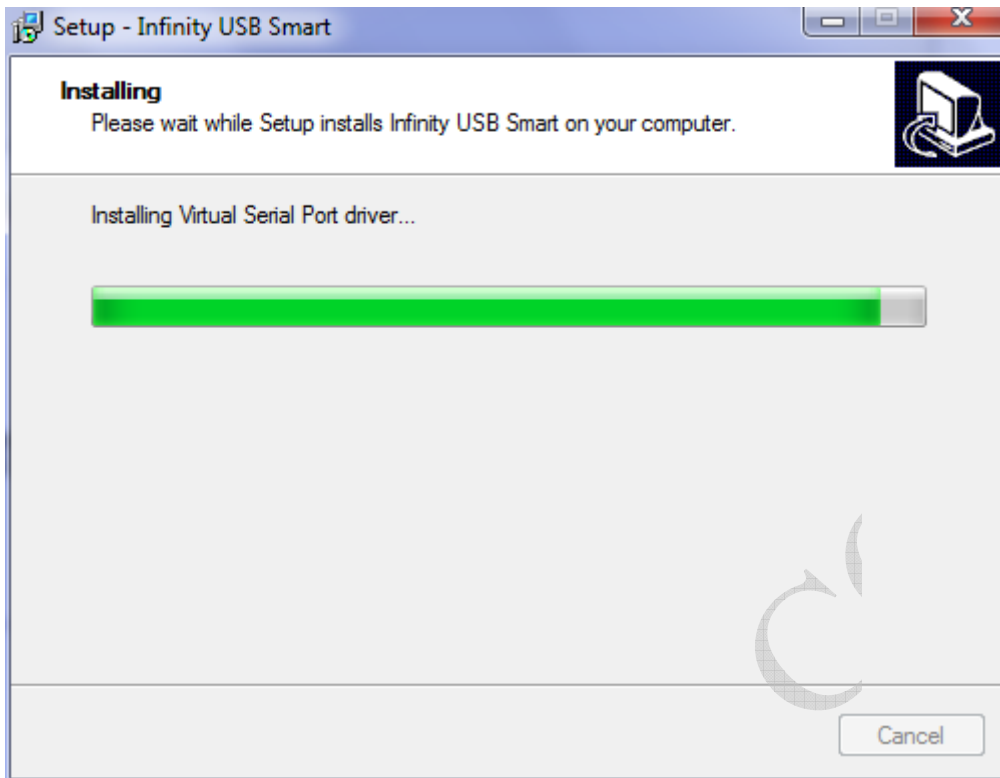
You can choose your own start menu name here. Press Next >



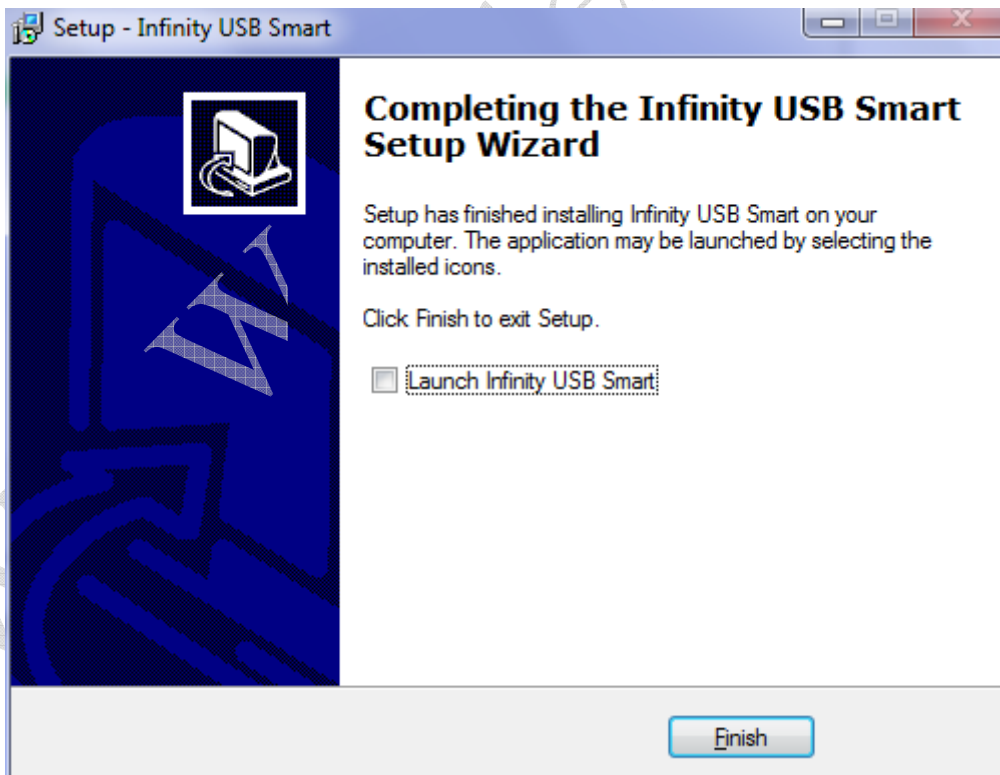
We recommend that you select Start manually (except if you plan to use the VCP (Virtual COM port on your PC). You can change it afterwards without reinstalling the software. Press Next >



Click on Install.



Installation is ongoing then you will have the following screen:

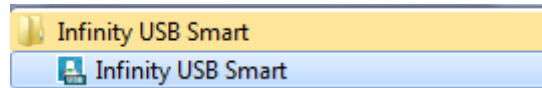


Installation is done press on Finish.

You can launch immediately the application by ticking: Launch Infinty USB Smart

Conversion to Smartreader+

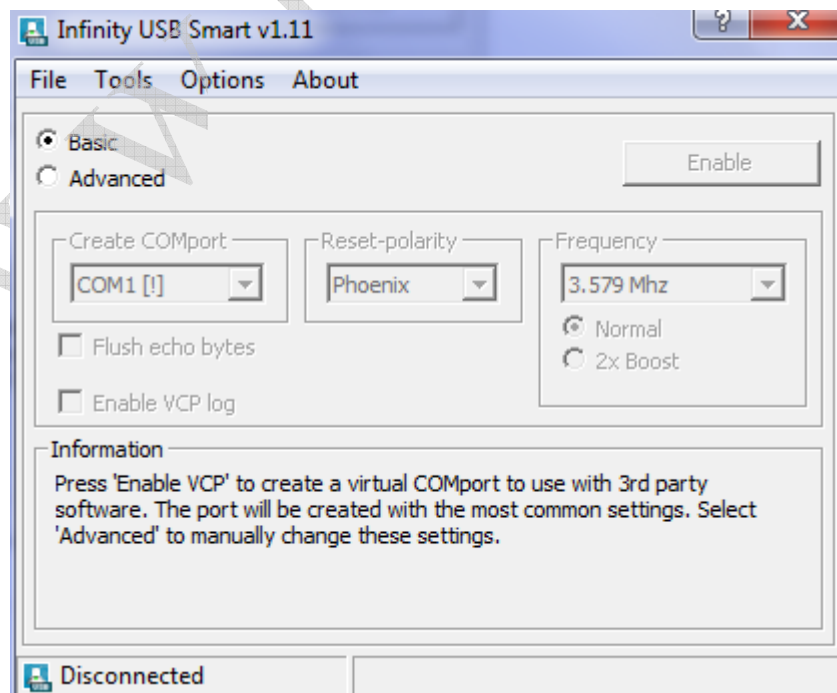
Start the application.



Choose the language:

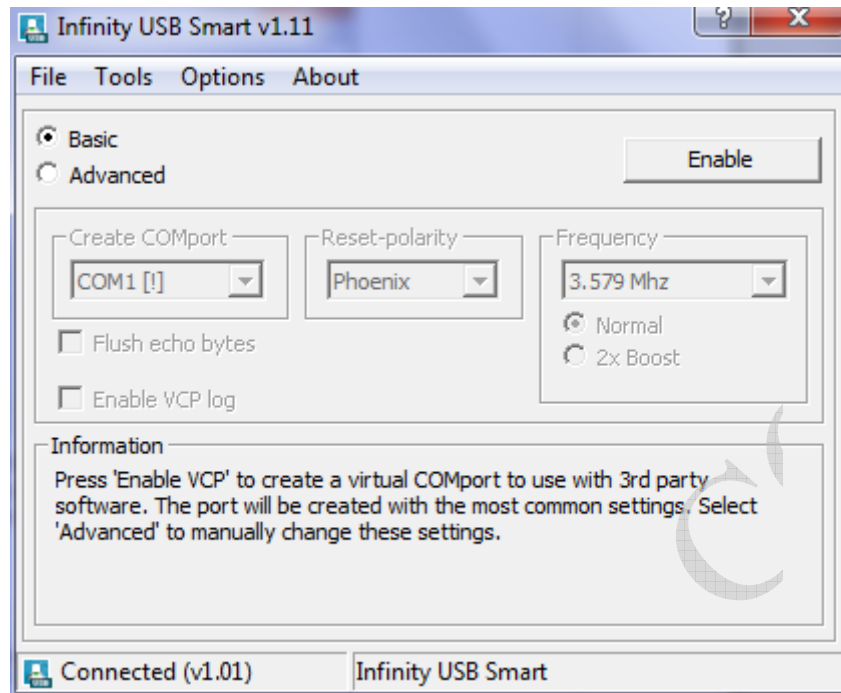


Select english.



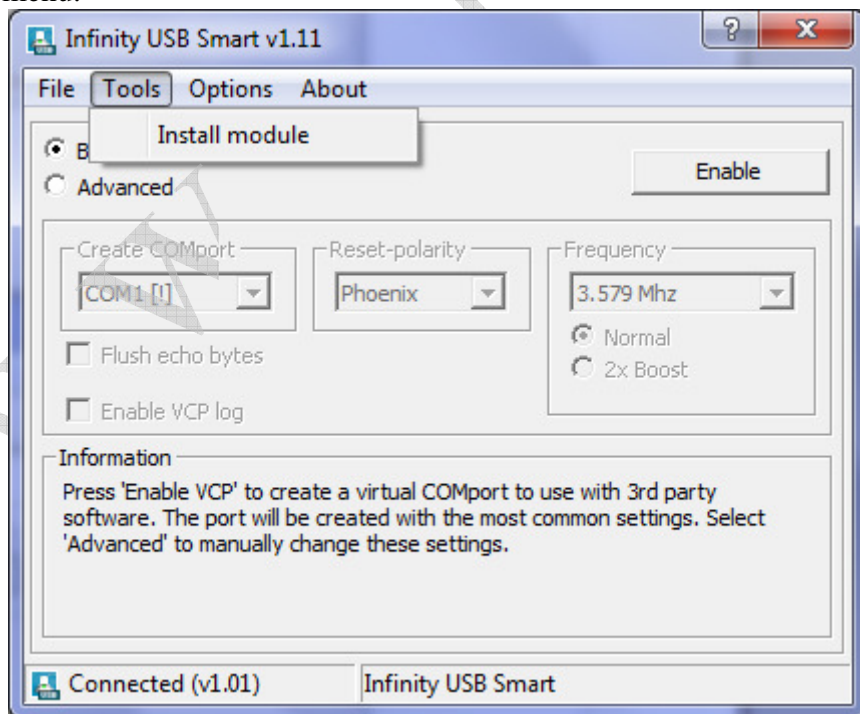
Current status is: Disconnected

Turn back the Infinity USB Smart and check that the switch is on the NORMAL position. Connect the Infinity USB Smart to your PC USB port and when it is properly detected and installed the screen will turn like this:



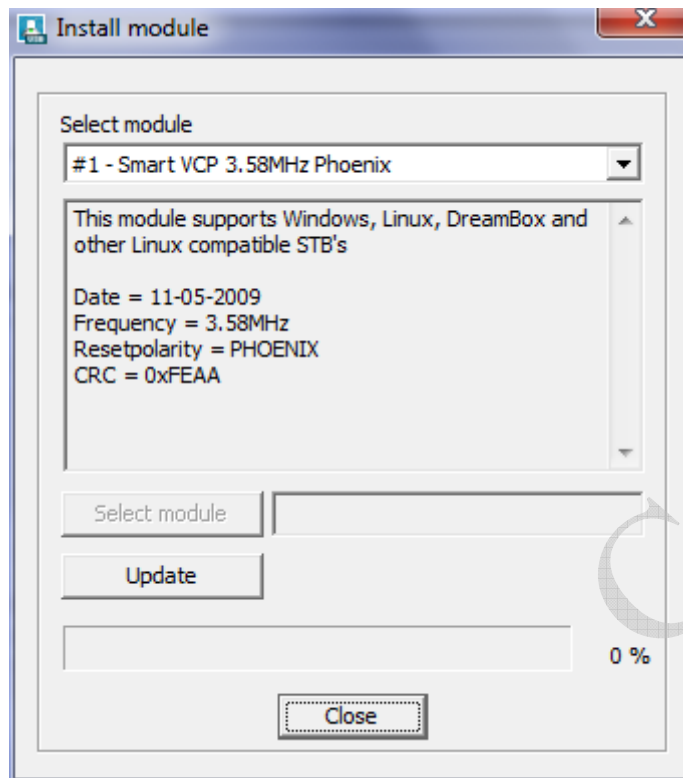
The status is now: Connected.

Go to the Tools menu.

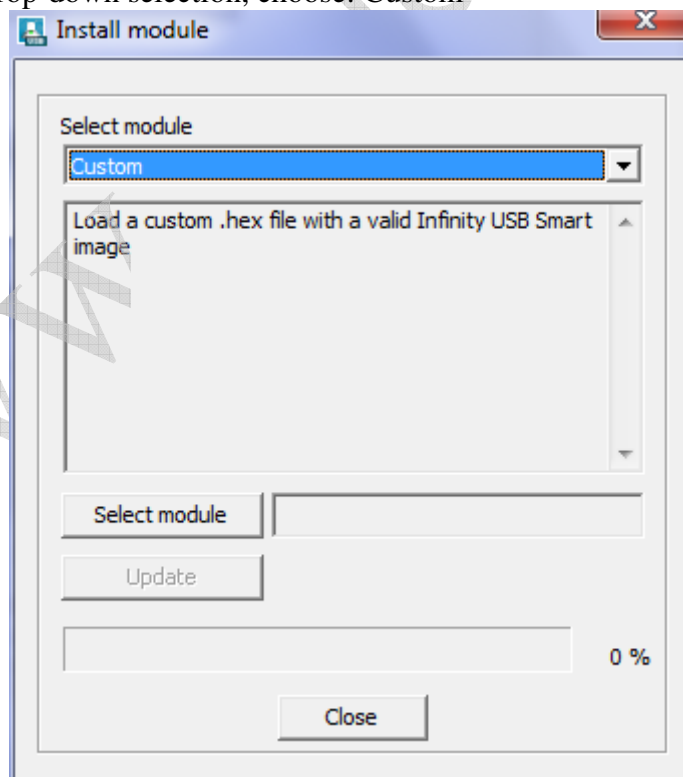


And select: Install Module

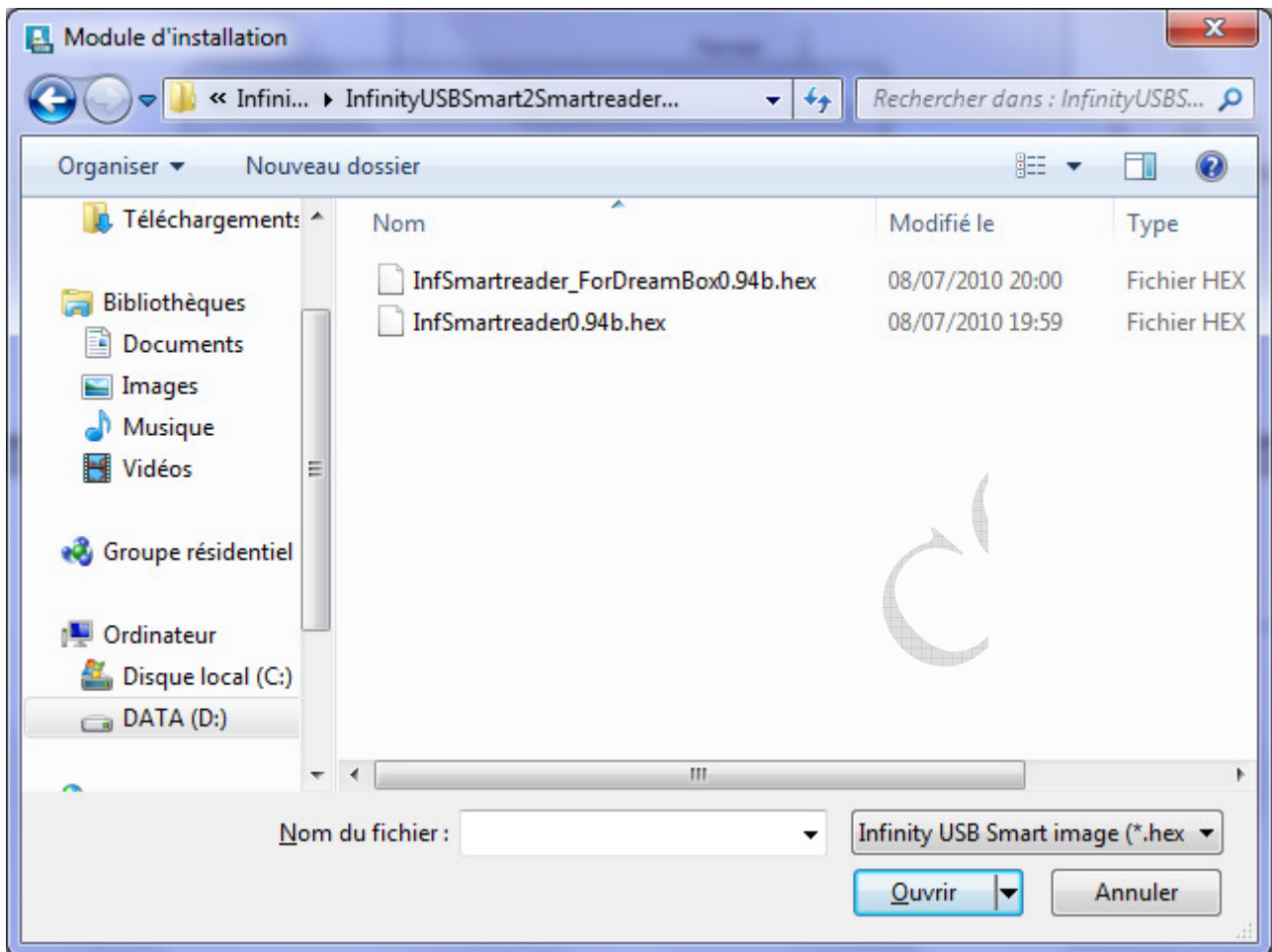
You will get this screen:



In the select Module drop-down selection, choose: Custom



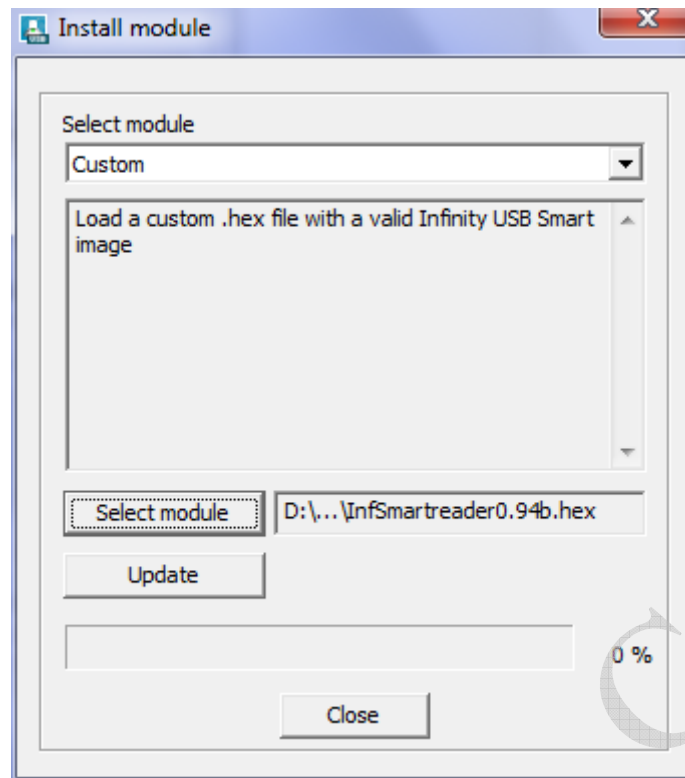
Click on Select module, browse your hard disk to select the files you want. (cf. Prerequisite).



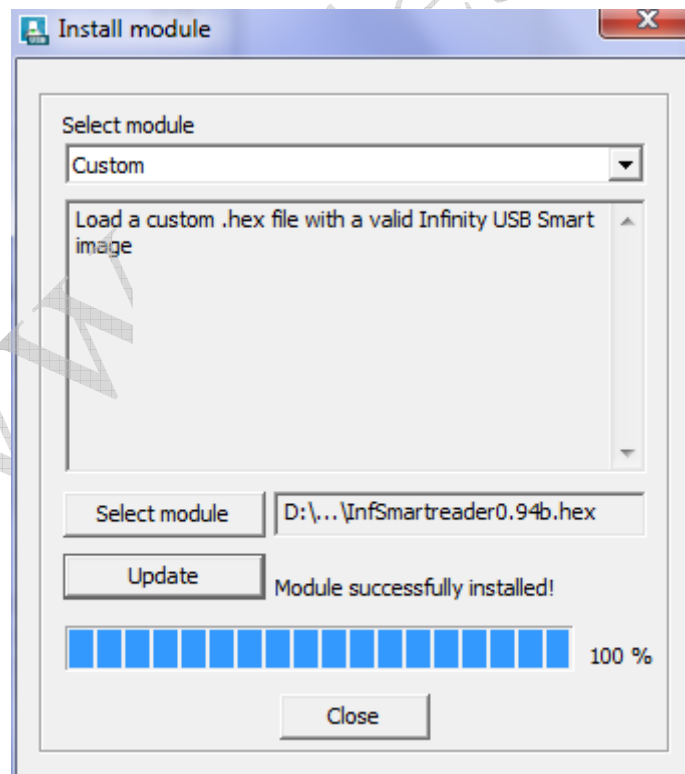
If you connect your Infinity USB Smart on a Dreambox select the file:
InfSmartreader_ForDreamBox0.94b.hex

If you connect your Infinity USB Smart on a PC, Azbox or NSLU select the file:
InfSmartreader0.94b.hex

Click on the file of your choice and press Open.



Click on: Update.



If everything went right, you should read: Module successfully installed!

Click on Close to close the windows, and then close the application.

Unplug your Infinity USB SMART from your PC.

Turn it back and set the switch on the MODULE position.

You need to insert the smartcard with the chipset to the front.

Connect it to your Dreambox, PC, Azbox, NSLU, ... it is now recognised and behaves like a smartreader+

WWW.ROLEBA.COM